



Analytical HPLC by SunChrom

Description

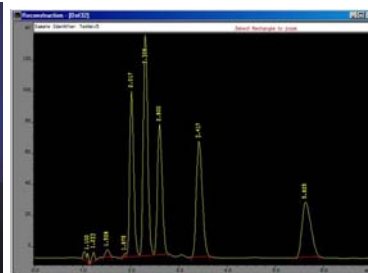
The modular analytical HPLC systems by SunChrom have been designed under the requirement of easy, intuitive operation, maximum flexibility and performance. The operating devices for all instruments are very similar, their description is clear and unmistakable. Coloured LEDs integrated in the keyboard facilitate additionally the estimation of the present status of every module in operation.

The pumps and the detector cells are constructed for a very wide flow range. The pumps can work from 1 $\mu\text{L}/\text{min}$ up to 50 mL/min . Diverse flow cells can be used from 50 nL/min up to 10 L/min .

Most different systems as kits

The basic **isocratic systems** with an autosampler can manage the main part of the analytics in the quality control. For complicated difficult jobs there are **gradient systems** available with diode array detectors (DAD).

Isocratic systems



Since the isocratic systems are extremely reliable, they are suitable in almost all fields of daily analytics. In most cases they consist of one autosampler, one pump and one degasser as well as one adequate detector.

Not only the hardware is extremely flexible, but also the software necessary for data acquisition, quantitative evaluation and documentation. It is available for all applications always in the right performance level. We deliver a basic system together with ChromStar Integrator or ChromStar light. For special requirements the highest performance level, ChromStar Full Version is also available.

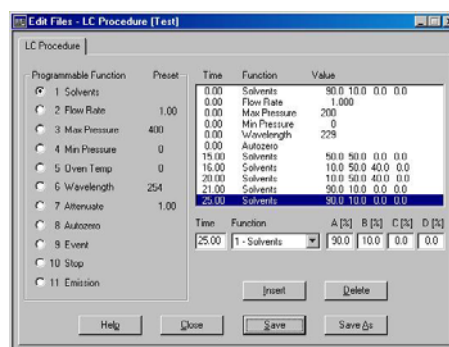
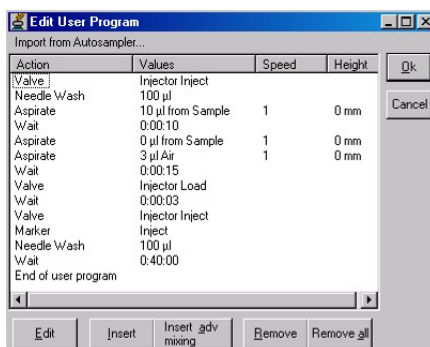
Gradient systems



Complicated samples require a sophisticated HPLC system to perform the necessary separation. In this case, you need a gradient system with free configured solvents mixture. This enables to vary continuously the eluting power of the solvent.

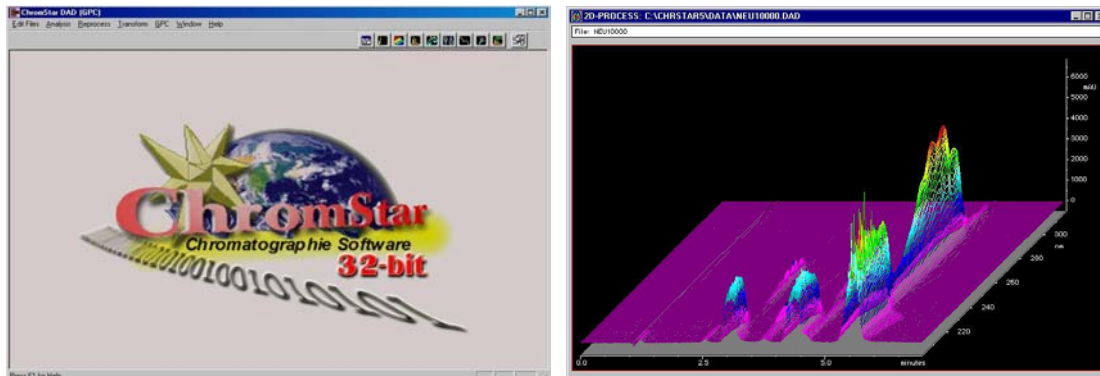
These systems are equipped either with a spectral photometer or a DAD, a fluorescence detector or even a combination of those to offer, beside a sensitivity as high as possible, a maximum selectivity.

As autosamplers a wide range of instruments are available, from Basic Marathon up to the high end unit Triathlon or Endurance, according to the sample quantity and the sample preparation. For very complicated or very diluted samples, the sample preparation, such as sample cleaning, sample concentration and derivatisation, is highly relevant.

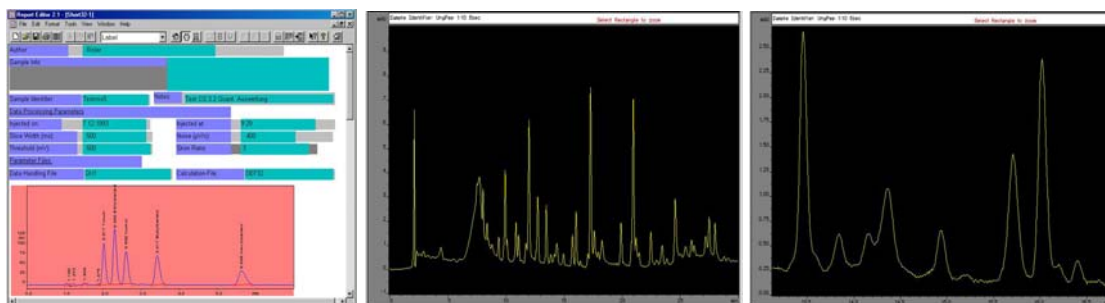


The autosamplers Midas, Triathlon and Endurance can all perform an automatic derivatisation of the sample. Endurance and Triathlon can even be equipped with one or two additional high pressure valves for the automatic sample cleaning or sample concentration.

The above mentioned hardware can be optimally assisted by the software versions from ChromStar light up to ChromStar DAD and Full Version. You can form gradients of every level of difficulty, control detectors, program autosamplers easily, in plain text and very efficiently. That way the most difficult separations succeed in the shortest time.



You can learn within a few hours the report editor that enables to define even the most sophisticated templates. Beside the general view of a chromatogram and the quantitative analysis it is possible, in special cases, to print out an automatic detail magnification. For example, you can visualise, beside the main components, even minimum secondary parts or peak collections with extended resolution.



To configure an optimal HPLC system for your analytics you may contact us. Our specialists will arrange for you an adequate hardware and software and they will assist you to realise your analysis.